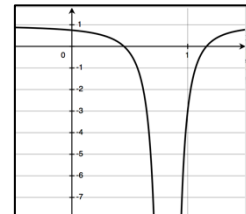


5. (9 pts) If $\frac{dy}{dx} = \frac{16(x+2)}{(x^2+4x-4)^3}$ and the graph of $f(x)$ is shown in the figure to the right, what is the equation of the function?



A. $f(x) = 1 - \frac{4}{(x^2 + 4x - 4)^2}$

B. $f(x) = -1 - \frac{4}{(x^2 + 4x - 4)^2}$

C. $f(x) = 35 - \frac{32}{(x^2 + 4x - 4)^2}$

D. $f(x) = -35 - \frac{32}{(x^2 + 4x - 4)^2}$